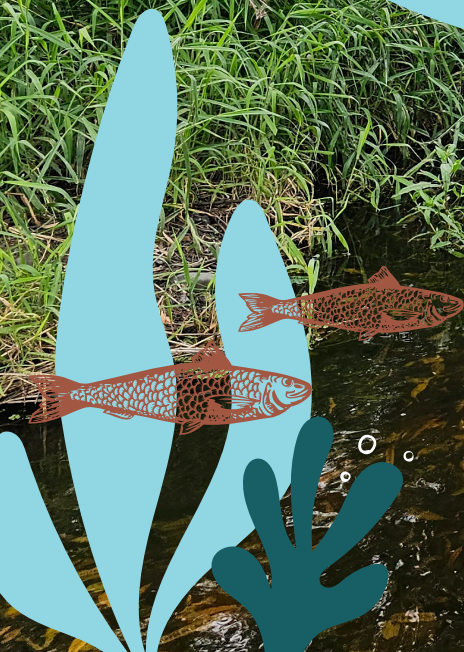


# Neerkol Creek Report Card

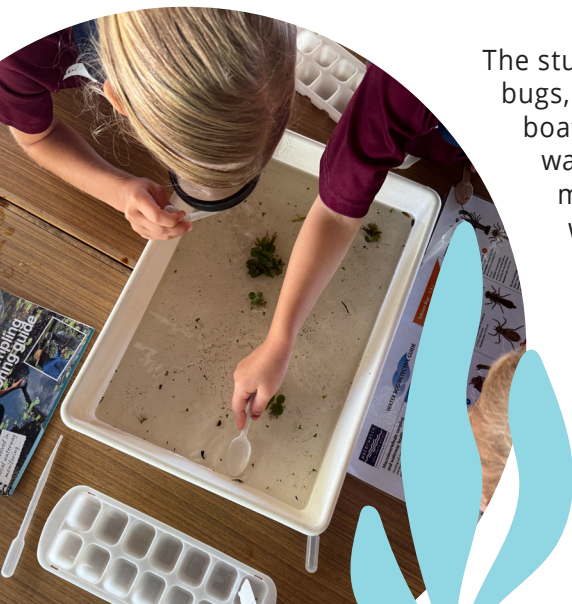
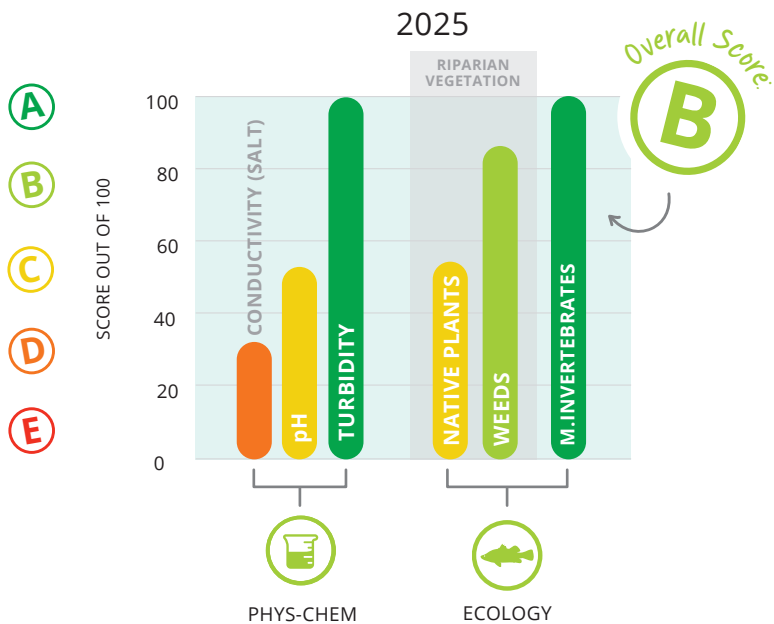
STANWELL STATE SCHOOL 2025

**B**



**fitzroy**  
partnership  
for river health

The students at Stanwell State School P-2 class recently got to measure and assess water quality from samples out of the nearby Neerkol Creek. In the classroom, together we measured pH (acidity/alkalinity), Electrical Conductivity (salinity) and Turbidity (suspended sediments) in the water samples. We then broke into groups to identify macroinvertebrates (water bugs) from samples. Water bugs can provide an indication of waterway health based on the variety and abundance of bugs found.



The students found many tolerant water bugs, like freshwater shrimp and water boatmen. We also identified sensitive water bugs such as caddisflies and mayflies which are a sign of good water quality.







Sensitive macroinvertebrates were identified with eight different types recorded scoring an A, alongside low turbidity and minimal weed invasion, confirming strong biodiversity and high water quality.



Some priority weeds in our area, such as Lantana, were identified at the sampling site. Electrical Conductivity scored a D which means the water is a bit salty.



We made some exciting discoveries at Neerkol Creek this year, finding a frog and a bee while collecting samples, and spotting baby fish and snails wriggling in their water bug trays!



# About this Mini Report Card

This Mini Report Card was created as part of Fitzroy Waterwatch, a citizen science program delivered by Fitzroy Partnership for River Health. Through hands-on science activities, students explore the health of their local waterways and learn how rivers support people, animals, and the environment.

This school visit was proudly delivered in collaboration with CQUniversity, our valued partner in supporting community science and education.

We sincerely thank Stanwell State School's teachers and students for welcoming us into the classroom and joining us on this waterway science journey.



## Our partners

Fitzroy Partnership for River Health exists to provide a more complete picture of river health across the Fitzroy Basin. This is only possible thanks to the generous support of our partners.



Australian Government



Queensland Government



GLENCORE



Santos



sunwater



Find out more:



 [riverhealth.org.au](http://riverhealth.org.au)