



Injune Lagoon Report Card

INJUNE STATE SCHOOL 2025

B

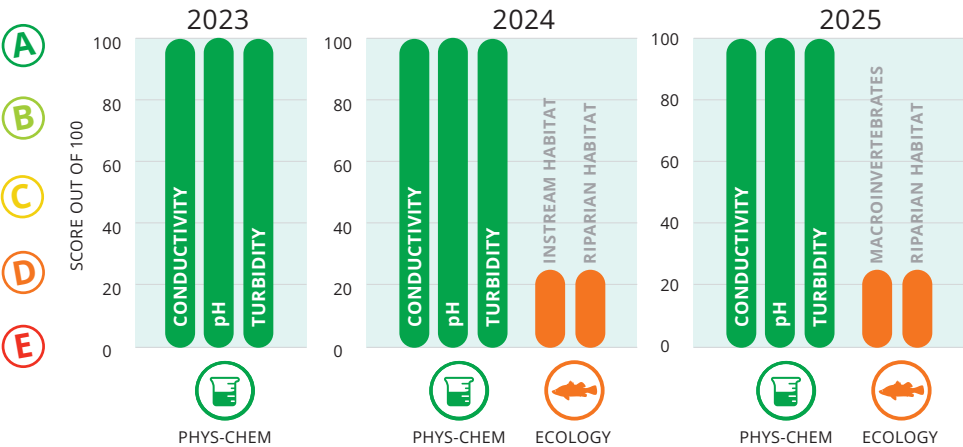
fitzroy
partnership
for river health

The students at Injune State School have been consistently monitoring a site on Injune Lagoon near their school for the past three years with the help of the Fitzroy Partnership for River Health and Origin Energy.

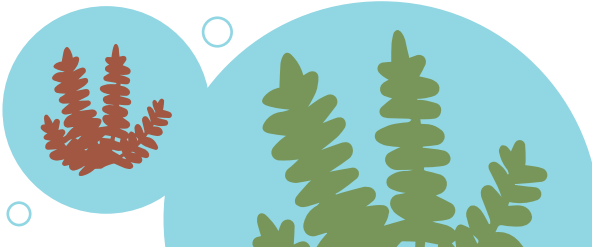
We are proud to report that Injune Lagoon is in good health. Water quality results for pH (acidity/alkalinity), Electrical Conductivity (salinity) and Turbidity (suspended sediments) have returned prefect results for the past three years.

Students identified many tolerant water bugs (macroinvertebrates), like freshwater shrimp, water treaders and whirligig beetles.

The students assessed riparian habitat (river bank) at Injune Lagoon and observed that the trees had good canopy cover and hollows that could provide habitat for native animals.



Students discovered Red Azole. Azolla is a native freshwater aquatic fern that is naturally found in billabongs and slow-moving water.





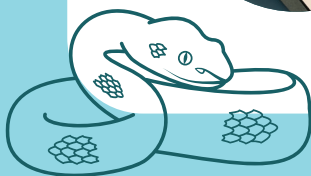
Seven types of macroinvertebrates were discovered along with perfect pH, conductivity, and turbidity and healthy riparian vegetation with canopy and hollows.



Only tolerant to very tolerant macroinvertebrates were present, and riparian condition scored a D, indicating room for improvement in vegetation structure and habitat quality.



The students sighted a Keelback (Freshwater Snake) swimming in the lagoon. These are Australia's only non-venomous, semi-aquatic snake. They usually live near freshwater such as dams, creeks and swamps.



About this Mini Report Card

Through hands-on science activities, students explore the health of their local waterways and learn how rivers support people, animals, and the environment.

This school visit was proudly delivered in collaboration with Origin Energy, our valued partner in supporting community science and education.

We sincerely thank Injune State School's teachers and students for welcoming us into their classroom again in 2025 and joining us on this waterway science journey.

Our partners

Fitzroy Partnership for River Health exists to provide a more complete picture of river health across the Fitzroy Basin. This is only possible thanks to the generous support of our partners.



Find out more:



 riverhealth.org.au