

To see more detail on key categories and indicators (including aspirational indicators for monitoring and reporting in the future), program design and report card results – visit the respective websites listed below.



Reef Water Quality Report Card

www.reefplan.qld.gov.au

RWQ

Regional Report Card Partnerships



Wet Tropics Waterways

WT

The Wet Tropics Waterways partnership's vision is Partnering for healthy tropical waterways and vibrant communities. Wet Tropics Waterways partners include all levels of government, peak bodies for regional industries (agriculture, tourism, transport, development, aquaculture), natural resource managers, research organisations and community groups working together towards a common goal.

www.wettropicswaterways.org.au



Townsville Dry Tropics Partnership for Healthy Waters

DT

The Dry Tropics Partnership's vision is to have healthy waterways, Reef, and a thriving Townsville community. The Partnership uses collaborative approaches to integrate environmental, social, economic, and cultural information to monitor and report on waterways, identify knowledge gaps, and provide guidance on management priorities.

drytropicshealthywaters.org



Mackay-Whitsunday-Isaac Healthy Rivers to Reef Partnership

MWI

The Mackay-Whitsunday-Isaac Partnership has a shared vision of healthy rivers and Reef contributing to a prosperous region. The Partnership aims to provide a complete picture of the region's waterway condition and advocate for improvements. The report card uses the best available independent science and integrates a range of Great Barrier Reef- wide and regional monitoring programs to measure waterway health in an environmental, social, economic and cultural context.

www.healthyriverstoreef.org.au



Fitzroy Partnership for River Health

FB

The Fitzroy is the largest eastern draining basin into the Great Barrier Reef and is influenced by a range of impacts including land clearing, population growth, agriculture, and industry. Fitzroy Partnership for River Health is committed to providing transparent, independent science to our communities to help them better understand the health of its waterways. After releasing the 13th Report Card in 2023, the historic trends within the system are becoming clearer and a newly designed monitoring program is providing more up to date reporting. Fitzroy Partnership for River Health also provides a unique platform for collaboration between its 23 Partners to better manage waterways and runs a successful Water Watch citizen science program.

www.riverhealth.org.au



Gladstone Healthy Harbour Partnership

GH

Gladstone Healthy Harbour Partnership's vision is that Gladstone has a healthy, accessible, working harbour. The partnership was formed to independently monitor and report on the health of the harbour – environmentally, socially, economically and culturally, as well as to identify opportunities based on rigorous science and strong stakeholder engagement to assist in future decision making.

www.ghhp.org.au

January, 2024

Report Card Explainer

Report cards in the Great Barrier Reef catchment: The Reef Water Quality Report Card and the Regional Report Cards

Report cards associated with Great Barrier Reef catchments, waterways and marine areas communicates scientific information, and informs management decisions to improve water quality and ecosystem health.

There are two distinct types of report cards.

- The **Reef Water Quality Report Card evaluates and reports on progress** towards the Reef 2050 Water Quality Improvement Plan (Reef 2050 WQIP) targets, objectives and long-term outcomes. The information is reported on a range of scales including paddock, sub-catchment, catchment, regional and Great Barrier Reef wide.
- The five **Regional Report Cards** are distinct from the Reef Water Quality Report Card in that they report on **local waterway condition** at a finer regional level as well as reporting on a range of indicators across the different regions such as social, cultural, economic health and stewardship.

Reef water quality report card

The Reef Water Quality Report Card is developed through the Paddock to Reef Integrated Monitoring, Modelling and Reporting Program (Paddock to Reef program). The Paddock to Reef program is jointly funded by the Australian and Queensland governments and unites more than 20 industry bodies, government agencies, Natural Resource Management organisations, landholders and research organisations.

The information in these report cards determines the success of actions and identifies whether further measures need to be taken to improve water quality in Great Barrier Reef catchments.



Australian Government



Queensland Government

Regional report cards

There are five regional report card partnerships: Wet Tropics, Townsville Dry Tropics, Mackay-Whitsunday-Isaac, Fitzroy and Gladstone Harbour.

Regional Report Card Partnerships are one of a number of activities under the Reef 2050 WQIP. These locally-based partnerships include stakeholders from a range of key organisations who collectively represent their region in the context of waterway health. The partnerships provide a valuable regional mechanism for information sharing, decision-making and action.

The partnerships bring together regional stakeholders including the agricultural, resource and engineering industries, ports, airports, scientists, Traditional Owners, community and environmental groups and all levels of government.

The regional partnerships produce a report card that presents scientific and technical information on the health of the waterways in an accessible and easily understandable way for their partners and communities, using indicators that are relevant to their region. The partnerships have a common goal of improving the understanding of local waterway health and the quality of water flowing into the Great Barrier Reef. In addition to the waterway health report card, the partnerships produce a stewardship report, which includes information on various actions taken in the region to respond to waterway issues, and details on urban water stewardship activities and relevant local programs such as citizen science programs.

Support and funding comes from their partners and the Australian and Queensland governments. Results from the Paddock to Reef program also feed into regional report cards.

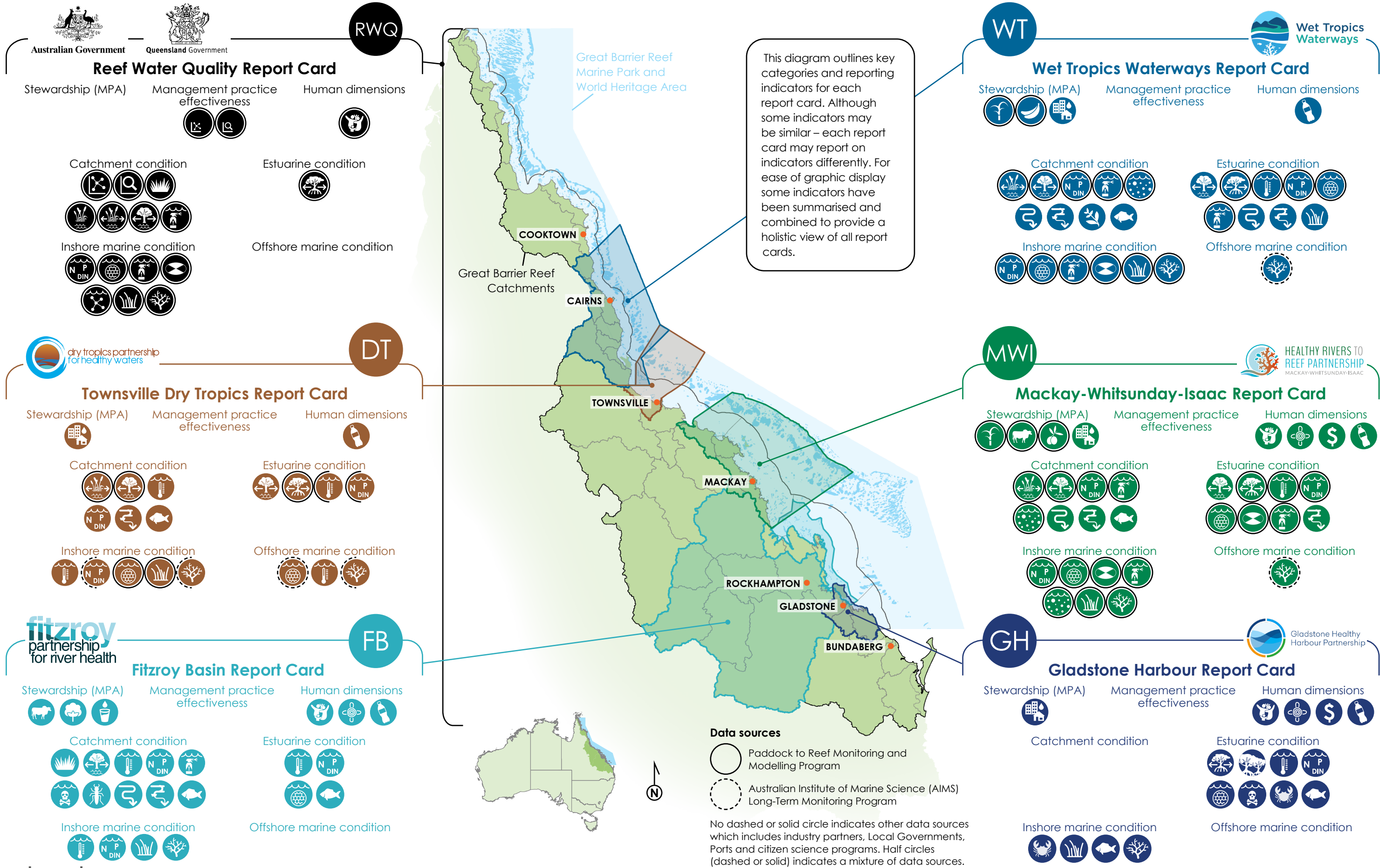
WT

DT

MWI

FB

GH



Icon legend

Stewardship - Management Practice Adoption (MPA)			Management practice effectiveness		Human dimensions		Catchment estuarine and marine condition			Water			Biodiversity (habitat and fauna)		