

# Annual Report 2022-23



## Message from the Chair: Tim Kendrick

Fitzroy Partnership for River Health is continuing its important work in the Fitzroy Basin with strength and determination. I acknowledge outgoing Chair Katy Steele and reflect on the Partnership's achievements under her guidance during 2022-23.

The major achievement for the Partnership has been the commencement of the new Fitzroy Basin Wide Monitoring Program with data from the first round of sampling used for the first time in the 2021-22 Fitzroy Basin Report Card. While the Monitoring Program is now being managed by partner and host Fitzroy Basin Association it is important to recognise the integral part Fitzroy Partnership played as a broker of collaboration towards a more comprehensive monitoring program for the region. Fitzroy Partnership will continue to work with FBA to promote enhancement of the monitoring underway in the Basin towards greater knowledge of the ecosystem as a whole. The 10 year data review was completed by Science Leader Cassandra Jones at the end of 2022 and this information will be utilised by the team towards greater science and reporting outcomes.

'Report Card fatigue' is a term quoted in relation to waterway reporting collectives world-wide. With more than a decade of operation, Fitzroy Partnership for River Health is committed to ensuring its ongoing relevance and importance to our partners and the community. Two strategic planning sessions were held during the year to refine our scope which will fit under three core focus areas: reporting on the state of the Basin; supporting stewardship and management actions; and community engagement and citizen science.

There is now a full complement of Partnership staff, with new Project Officer Myfina Healy rounding out a strong team of four across management, science, engagement and communications. Increased capacity will allow for greater resourcing of human dimensions, citizen science and community engagement.

I thank our valued partners for their ongoing commitment to the Partnership, and to providing independent waterway health reporting to the community. We welcomed a new partner, Heritage Minerals during the year, which is a positive endorsement of the role we play in this region. We urge partners and their representatives to get involved and work with the team towards greater community understanding of waterways and improved water management outcomes in the Fitzroy Basin.



Tim Kendrick (Incoming FPRH Chair), Katy Steele (Outgoing FPRH Chair) and Leigh Stitz (FPRH)



## Our commitment to Fitzroy First Nations

We acknowledge the traditional custodians of the lands and waters within the Fitzroy Basin where we conduct our reporting and pay our respects to them, their cultures and Elders past, present and emerging.

We pledge our commitment as an advocate for increased Traditional Owner engagement and incorporation of cultural values in water management practices in the Fitzroy Basin.

During 2022-23 we contributed financially and via staff resourcing to a range of First Nations meetings, workshops and research outcomes across the region. We acknowledge the struggles and efforts of Elders and representatives of the 17 First Nations through the years and will continue our commitment to relationship building and understanding across the Fitzroy Basin.



## 2022-23 Achievements

### Communications & engagement

**9** Major Partners and 15 Partners  
1 new partner



**2000** report cards printed, distributed and downloaded for stakeholder and community awareness

**14** Community, school and citizen science events and activities

educating more than **2000** people about waterway health



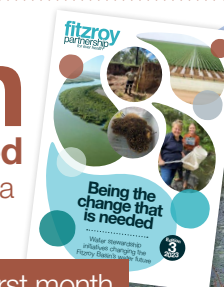
More than **35,000** people viewed FPRH news and information on Facebook during 2022/2023

@FitzroyPartnership  
4RiverHealth  
New Instagram page created to continue our community outreach



**3<sup>rd</sup>** edition Stewardship Report released showcasing partner initiatives to create a better water future

over 300 Stewardship page views in first month



### Platform for collaboration

**1** New Fitzroy Basin Wide Monitoring Program established and commenced data sampling, led by Fitzroy Partnership for River Health team and a collaboration of partners

**2** Strategic Planning sessions held moving towards Strategic Plan: 2024 to 2026



### Science

**12th Ecosystem Health Report Card** released for 2021-22 using data from the

**NEW FITZROY BASIN WIDE MONITORING PROGRAM**

**C** High C grade overall for 2021-22 with a relatively stable track of year to year Basin grade over 12 years of reporting



Better representative spread of sites for reporting

**3** or more sites per catchment monitored

**6** times per year

40,000 kilometres of waterways

### Better ecological data



including at least 1 macroinvertebrates sampling per site



**10** year data review

completed by our Science Leader to guide decision making into the future



**1** New project officer

to increase citizen science and human dimensions outcomes





# Partnership linkages

Fitzroy Partnership for River Health is relevant to a range of regional plans and policies and our reporting links at the local, regional, State and National level. Some of these include:

**The Reef 2050 Long-Term Sustainability Plan** – under Water Quality Action 23, to expand integrated water quality monitoring and report card programs in the Fitzroy Basin priority catchment.

**Reef Water Quality Protection Plan 2013** – Our report card is aligned to the GBR report card and utilises relevant data from monitoring programs within the Region.

Our reporting meets the requirements of the Queensland **State of the Environment** Indicators to measure the following six overarching Sustainable Development Goal (SDG) targets: Good Health and wellbeing, clean water and sanitation, responsible consumption and protection, life below water, life on land and partnerships for the goals.

**Water Quality Improvement Plan** – The Partnership utilises the environmental condition information from the WQIP to ensure consistency for management priorities, environmental values and ecologically relevant targets.

We align our monitoring, management and research strategies with **CQSS2030 – Fitzroy Basin Association’s Central Queensland Sustainability Strategy 2030** to provide a joint strategic direction for ongoing planning, practice and change.

We work closely with similar **monitoring and reporting initiatives** in South-East Queensland, Mackay, Gladstone, Townsville and Cairns to collaborate and share ideas.



Statement of Income and Expenditure Fitzroy Partnership for River Health	
2022-23 (GST Exc)	
Income	\$885,500
Expenditure	\$806,800
Surplus	\$78,700

# Partners



## Our team

Management Committee		
Katy Steele (outgoing Chair) BHP BMA	Rachel D'Arcy OGBR	Graham Volck Cotton Australia
Tim Kendrick (incoming Chair June 2023) Anglo American	Adam Christison Origin Energy	Patrice Brown CQG Consulting
Elyse Riethmuller (Deputy Chair) FBA	Cr Donna Kirkland RRC	Matt Eyles DNRME
	Frances Hayter QRC	Lu Wang Glencore
	John Anger Peabody	Alex Staines Kestrel

Independent Science Panel		Staff
Dr Eva Abal (Chair)	Dr Helen Stratton	Leigh Stitz
Dr Sue Vink	Dr Nicole Flint	Eva Duerkop
Dr Roger Shaw	(Dr John Platten – retired during 2022-23)	Myfina Healy
Dr Barbara Robson		Nicole Dendle



**Contact**  
Dr Leigh Stitz, Executive Officer  
(07 4999 9821, leigh.stitz@riverhealth.org.au)  
**riverhealth.org.au**