

# Strategic Plan 2021-2024

Fitzroy Partnership for River Health is a formal collaboration between government, industry, research and community organisations that have an interest in the health of waterways across the Fitzroy Basin.

## Vision

Healthy waterways in the Fitzroy River Basin through trusted information

## Mission

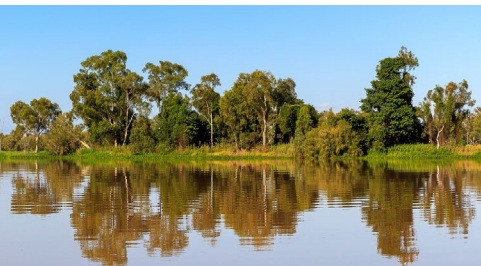
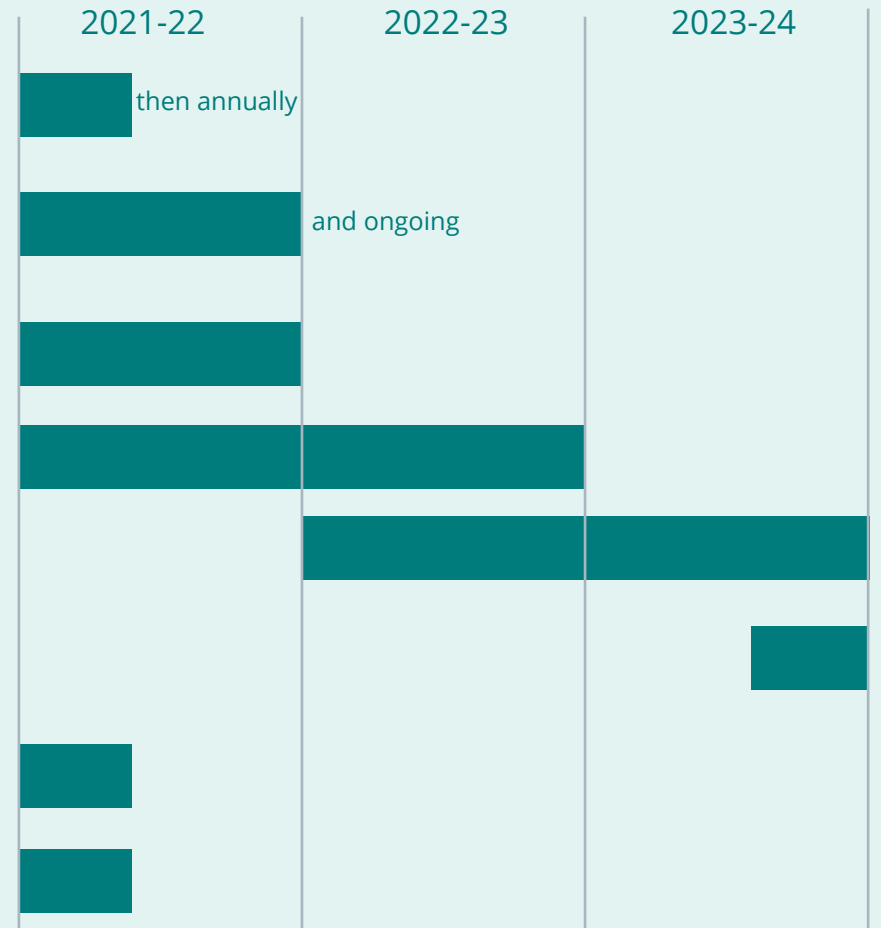
A collaborative partnership reporting on the condition, sustainable use and resilience of waterways to the Fitzroy Basin community.

## Scope

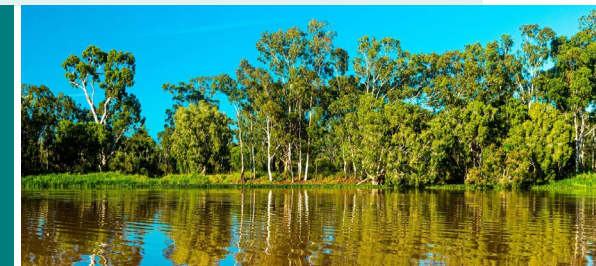
All waterways in the Basin including estuaries, and activities to maintain and enhance the health and resilience of waterways.

## Strategic Activities

1. Review the engagement and marketing strategies.
2. Support the implementation of the Regional REMP to enable the best coverage and use of monitoring resources.
3. Develop new indicators and reporting areas to ensure relevance of the Partnership is maintained.
4. Undertake a 10-year data review of the Ecosystem Health Index.
5. Undertake a 10-year overall Program Design review.
6. Include recommendations from EHI Report Card results and trends in the Stewardship Reports.
7. Ensure Science Panel expertise covers all elements of Partnership reporting.
8. Undertake workforce planning to maintain employee engagement and ensure adequate resourcing into the future.



Fitzroy Partnership was formally established in 2012. More information about the partnership is available at [riverhealth.org.au](http://riverhealth.org.au)



We recognise our valued partners for their commitment to a collaborative partnership reporting on the condition, sustainable use and resilience of waterways to the Fitzroy Basin community.



Queensland Government



Australian Government

**BHP**



BHP Mitsubishi Alliance

**Peabody**



GLENCORE



**Santos**



**sunwater**



**Contact Fitzroy  
Partnership for  
River Health**

Dr Leigh Stitz, Executive Officer

(07) 4999 2821

leigh.stitz@riverhealth.org.au

www.riverhealth.org.au

This initiative is proudly hosted by Fitzroy Basin Association Inc.