

Show your water leadership

fitzroy
partnership
for river health
Value proposal

Join a network of government, mining, industry, agriculture, research and community partners working to provide trusted information for healthy rivers in the Fitzroy Basin.

About us

Fitzroy Partnership for River Health was formed in 2012 and includes members from government, industry, research and community who all have an interest in the health of waterways across the Fitzroy Basin.

Our role is to facilitate improved water quality monitoring, collate and assess data collected by organisations across the basin, and develop public report cards on waterway health.

Data and results are assessed by an independent science panel to ensure annual report cards accurately reflect condition and trends of waterways for ecosystem health.

Our Partnership Network, of which every partner is a member, meets regularly to affirm their commitment to waterway health and guide our vision of providing trusted information for healthy rivers in the Fitzroy Basin.

Top 8 reasons to invest

- 1 Social and environmental licence to operate.** Demonstrate your organisation's commitment to the environment and waterway health in the region that you operate.
- 2 Independent and trusted source of waterway health information.** Be part of the most established waterway health partnership in Queensland providing trusted and independent reporting to the community.
- 3 A true partnership.** Access and collaborate with a diverse and influential network of stakeholders operating in the Fitzroy Basin.
- 4 Comprehensive dataset.** The Fitzroy Partnership is amassing the largest environmental and waterway dataset for the Fitzroy Basin. Be at the table as we work towards a more comprehensive regional monitoring program.
- 5 Up-to-date waterway news.** Our members are kept up-to-date with the latest water policy, planning and management activities relevant to the Fitzroy, and have opportunity to discuss river health topics in depth at regular Partner Network meetings and events.
- 6 Detailed water reports.** Detailed site reports are available for members only to explore supplied data for your monitoring sites to compare to ecosystem health thresholds.
- 7 Engage and promote your commitment to supporting a waterway health report card of national and international renown.** Report cards, websites, products and events proudly display your logo in recognition of contributions. Use our Member Seal to promote your commitment.
- 8 Influence our future.** All partners are included in the Partners Network meetings and elect our Management Committee. Together these committees guide the strategic direction of the Fitzroy Partnership for River Health.

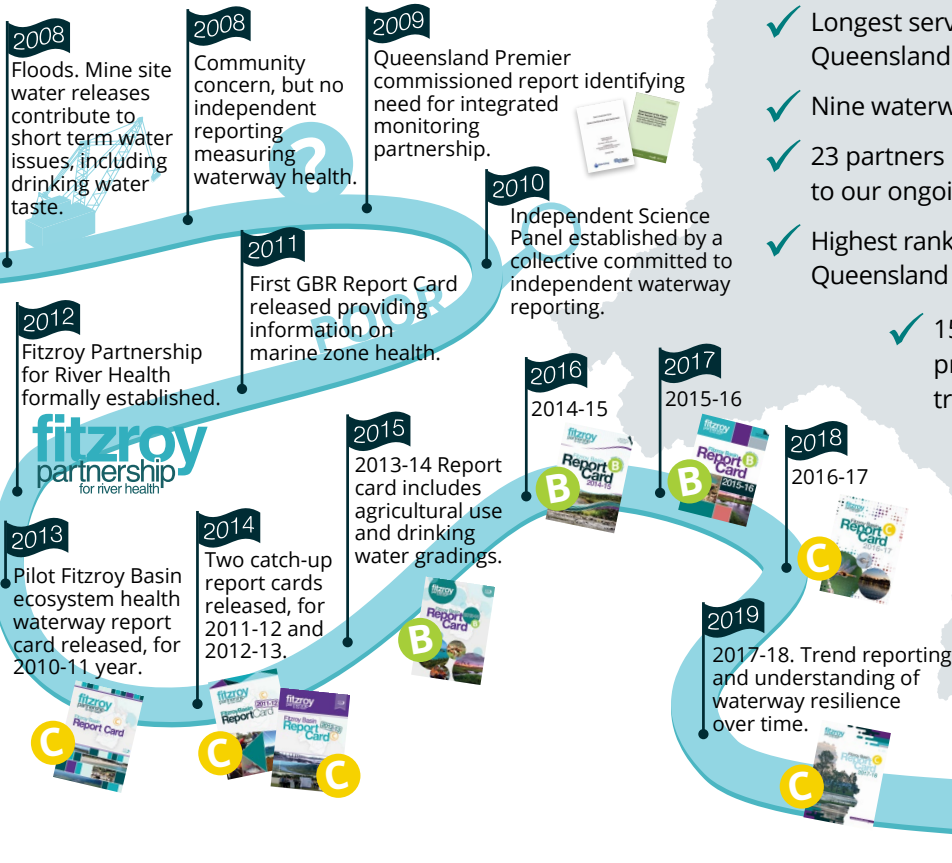
If you are thinking about joining Fitzroy Partnership, it's a unique opportunity to demonstrate your commitment to the environment, your commitment to sustainability and a commitment to water stewardship.

Elmien Ballot, Coronado Curragh

Being a part of the Partnership is really important for the cotton industry. It makes us part of the bigger picture. As the Fitzroy Basin is one of the biggest catchments draining off the East coast, it's really important to us that we support reporting through to the community. It ensures the community can have confidence in our industry.

Nigel Burnett, Cotton Australia

Our history



Our achievements

- ✓ Longest serving reef regional waterway partnership in Queensland.
- ✓ Nine waterway ecosystem health report cards
- ✓ 23 partners including 15 founding partners committed to our ongoing vision
- ✓ Highest ranked regional waterway partnership in Queensland [‘What’s our grade? Evaluation Report’ – B+]
- ✓ 15 schools and community groups provided water monitoring kits and training to care for local creeks
- ✓ Three HeART of the Basin Scholarships awarded for students studying water in the Fitzroy Basin
- ✓ Represented our Partners at hundreds of community events.

Invest in the Partnership

We acknowledge the leadership of our partners in supporting independent waterway monitoring.

We encourage you to continue your membership in 2020-2021 or join our network.

Partners pay an annual membership fee along with an additional financial contribution based on waterway monitoring or community and environmental obligation. Minimum investment for partners is \$5,000. Major partners are those that contribute more than \$25,000. More detail can be provided upon request.



The Fitzroy Partnership for River Health is a true partnership. I encourage anyone that is considering joining – simply join. Participate and enjoy engaging with community members, and the broad number of people and experiences within the Partnership Invest in the Partnership.

Chair of Fitzroy Partnership for River Health, Daniel Yates, Idemitsu



Contact

Dr Leigh Stitz, Executive Officer, (07) 4999 9821

riverhealth.org.au