

The background is a photograph of a river with large, light-colored rocks and some green vegetation on the banks. Overlaid on this is a semi-transparent map of the Fitzroy River catchment area, showing various sub-catchments outlined in grey and the main river network in teal.

Be part of
something
BIGGER

fitzroy
partnership
for river health

Partnership Proposal

FITZROY PARTNERSHIP FOR RIVER HEALTH

BE PART OF SOMETHING BIGGER...

WHO WE ARE

Fitzroy Partnership for River Health was formed in 2012 and includes organisations from government, industry, research and community who all have an interest in the health of waterways across the Fitzroy Basin.

WHAT WE DO

Our role is to facilitate improved water quality monitoring, collate and assess data collected by organisations across the basin, and develop public report cards on waterway health.

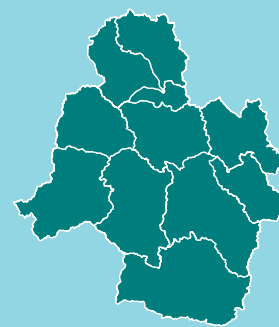
Data and results are assessed by an independent science panel to ensure annual report cards accurately reflect condition and trends of waterways for ecology, drinking water suitability and agricultural suitability.

Report cards increase public awareness of waterway health and facilitate better waterway management decision making.

PARTNER BENEFITS

Join one of Australia's most highly recognised and influential report card initiatives and help provide a more complete picture of river health for the Fitzroy Basin.

- Access reliable waterway health information that is verified by an independent science panel
- Community recognition and promotion
- Networking opportunities via the partners network
- Affirm your organisations commitment to sustainable use of Fitzroy Basin waterways
- Keep current with the latest water policy, planning and management activities relevant to the Fitzroy Basin



Fitzroy Partnership for River Health provides the most up-to-date information on the health of Fitzroy Basin waterways.

The Fitzroy Basin, in Central Queensland, is comprised of over 20,000km of waterways, including six major river systems.



WHY INVEST?



Nurture Fitzroy's independent and trusted waterway information source

Your membership enables collation, assessment and reporting of waterway health for the largest catchment draining to the Great Barrier Reef. Your membership maintains a high calibre independent Science Panel to ensure results are verified and underpinned by best available science.



Contribute to your social and environmental licence to operate

As an organisation operating in the Fitzroy, your contribution is recognised and noticed. Membership affirms your commitment to sustainable use of waterways and providing a more complete picture of river health.



Celebrate regional leadership and innovation

Members are promoted as being responsible for maintaining one of the most highly recognised and influential report card initiatives in Australia.



Grow knowledge and information

The Fitzroy Partnership is amassing a comprehensive environmental and waterway dataset for the Fitzroy. It is being used by all layers of society including setting of water quality guidelines by government, supporting projects for industry and for local material in science assignments.



Keep current with waterway happenings

Our members are kept up-to-date with the latest water policy, planning and management activities relevant to the Fitzroy. The Partners Network meetings and events provide opportunity to discuss topics in depth.



Engage and promote your commitment

Report cards, websites and other promotional products proudly display logos of our members in recognition for contributions. A special Fitzroy Partnership 'member seal' can be used by members in promotional materials. We collaborate with members on report card launches and regional promotions.



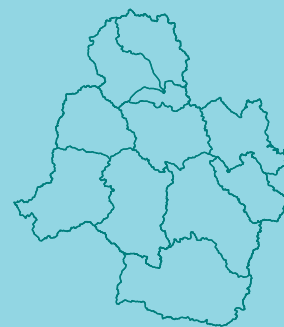
Access individualised site reports

Detailed site reports are available that allow members to explore supplied data for their monitoring sites and compare this to ecosystem health thresholds.



Influence our future

Members are automatically included in the Partners Network that meets regularly and elects our Management Committee. Together these two governing committees set the strategic direction of the Fitzroy Partnership.



Partners have a common goal of providing a more complete picture of river health.

They support this goal by providing funding, resources and contributing water quality and ecosystem health monitoring data through data-sharing arrangements.

This data is used to complete annual report cards on the health of Fitzroy Basin waterways.



CONTINUE MEMBERSHIP OR JOIN US

Partners currently pay an annual membership fee along with an additional financial contribution based on waterway monitoring or community and environmental obligation. Our current partners have agreed that the fees for 2019-2020 are representative of this of this obligation. Minimum investment for Partners is \$5,000 + CPI with \$7,500 + CPI per operation (active, non-active or closed). Major partners are those that contribute more than \$25,000.

Previous financial year partners:



In addition to financial contributions, Fitzroy Partnership for River Health strongly encourages partners to contribute monitoring data. Currently the annual provision of monitoring data equates to around \$3,000,000 in-kind support. This allows the partnership to create more accurate and comprehensive reporting tools.

To discuss how we can continue or start to work together, please contact...

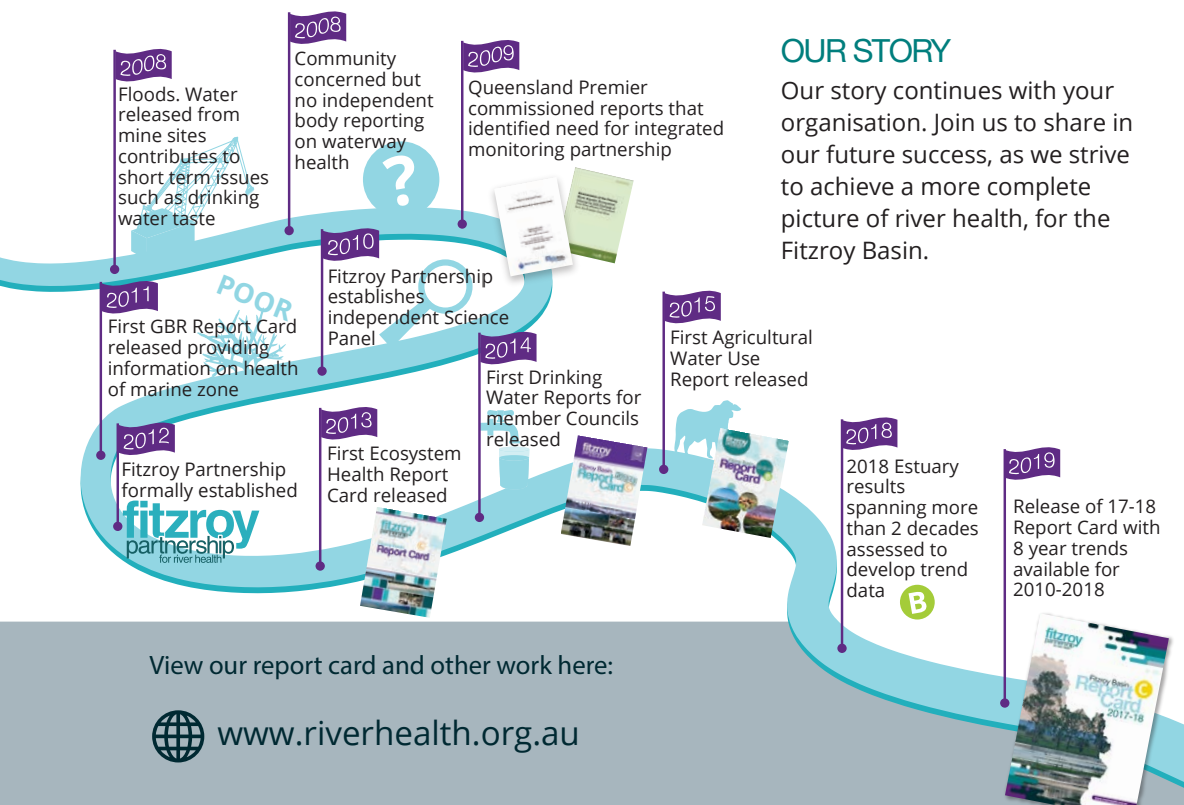


Dr. Leigh Stitz
Executive Officer
M: 0429 998 820 P: 07 4999 2821
leigh.stitz@riverhealth.org.au



OUR STORY

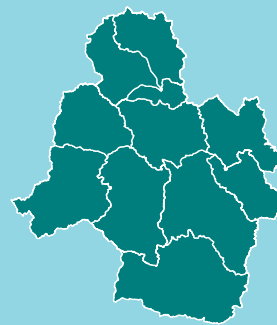
Our story continues with your organisation. Join us to share in our future success, as we strive to achieve a more complete picture of river health, for the Fitzroy Basin.



View our report card and other work here:



www.riverhealth.org.au



Be part of something bigger,
join us!

OUR ACHIEVEMENTS

- 🏆 Eight report cards on the health of Fitzroy Basin waterways released
- 🏆 24 organisations working together to deliver annual and independent river health report cards
- 🏆 Identified as an internationally significant example of shared water stewardship in the mining sector by the International Council on Mining and Metals
- 🏆 Focus of five post graduate studies – social science in cross-sector partnerships, water chemistry and community monitoring platforms
- 🏆 15 schools and community groups received water monitoring kits and training to care for their local creek/s
- 🏆 Three scholarships awarded to CQUniversity research students studying water quality in the Fitzroy Basin