

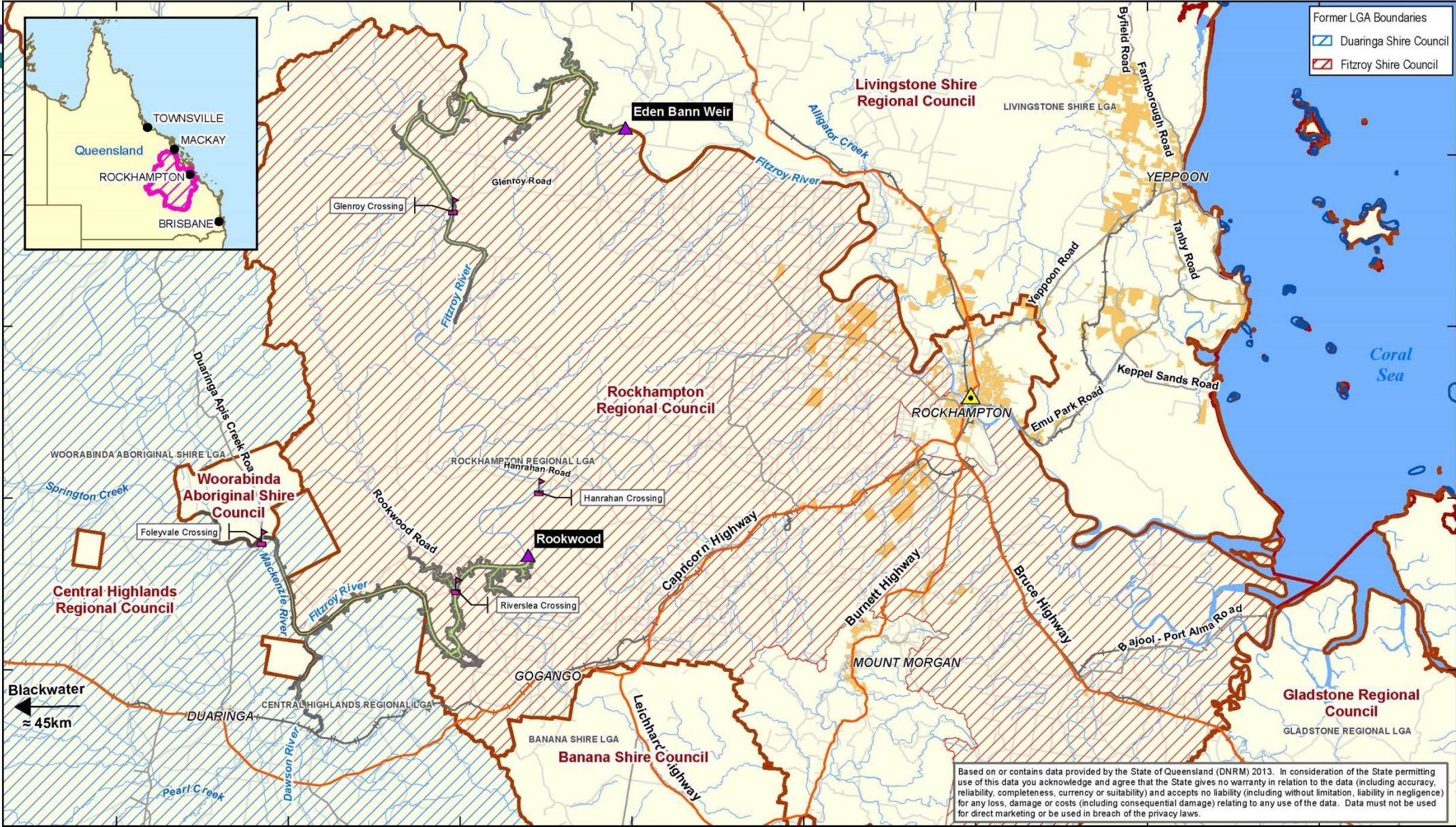
# Lower Fitzroy River Infrastructure Project

Ralph Woolley





# Location of the Project and Infrastructure





# Project Objectives

- **Delivery of Central Queensland Water Planning**

- Central Queensland Regional Water Supply Strategy 2006
- Water Resource (Fitzroy Basin) Plan 2014
- Strategic water infrastructure reserve (nominal volume 76,000 ML)

- **Fitzroy Basin Resource Operations Plan**

Gladstone Area Water Board: up to 30,000 ML of the reserve for urban and industrial water supplies

A local government authority: up to 4,000 ML of the reserve for urban water supplies for the Capricorn Coast

Entities to take up to 42,000 ML of the reserve. Potentially agricultural supply

# Ecology Overview

- Fish
  - No listed species
- Reptiles
  - Fitzroy River turtle and White Throated Snapping turtle (listed)
- Mammals
  - Platypus (no concern)
- Flora
  - Remnant vegetation
  - Brigalow threatened ecological community
  - Black ironbox
  - Riparian on river banks Summary of findings/information – use graphics/diagram if possible

## MNES

- Facilitated Development such as agriculture
- Reef 2050 Plan –sediment and nutrients

## Further Information

- aEIS and EIS on the Department of State Development website,  
[www.statedevelopment.qld.gov.au/lower-fitzroy](http://www.statedevelopment.qld.gov.au/lower-fitzroy)  
aEIS submissions closes at 5PM 27 June 2016
- Further details,  
Gladstone Area Water Board (07) 4976 3019 per Ralph Woolley  
[rwoolley@gawb.qld.gov.au](mailto:rwoolley@gawb.qld.gov.au)  
SunWater (07) 31200043