

fitzroy
partnership
for river health

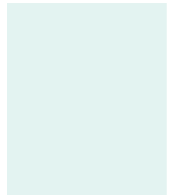
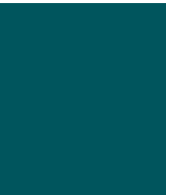
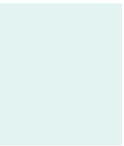
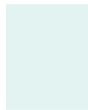
Fitzroy Basin

Report Card

2010-11



grades
inside



A snapshot in time for future comparison.

This is the first time waterway monitoring data has been drawn together for the entire Fitzroy Basin. The grades shown on this report card summary reflect waterway health in 2010-11.

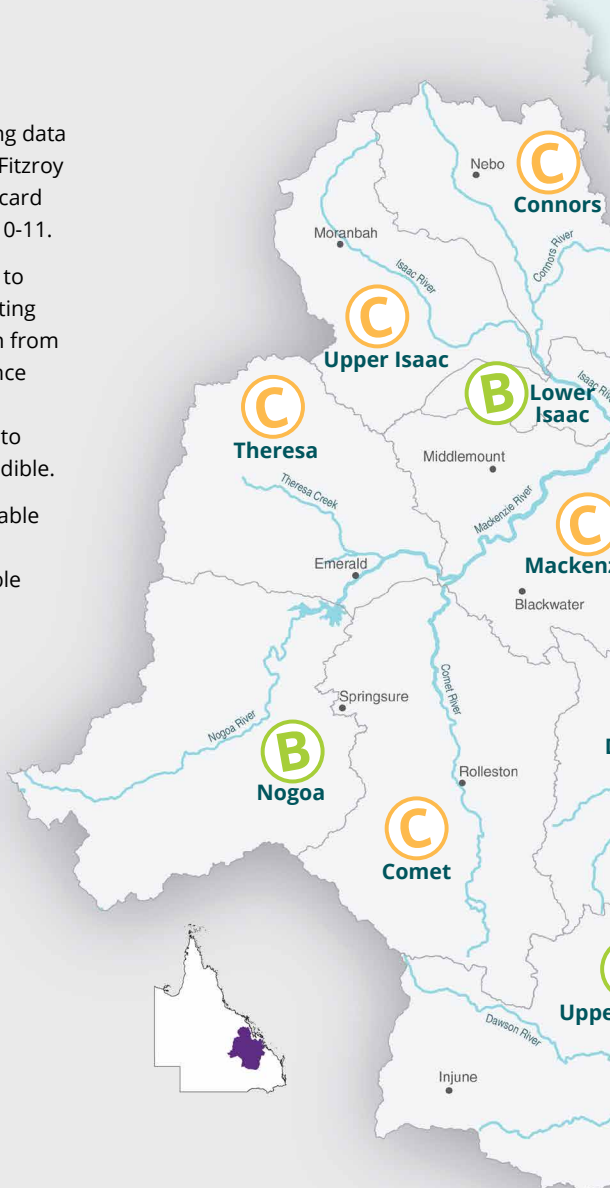
Being a new collective, it has taken time to develop a way of processing and evaluating more than 340,000 sample results taken from hundreds of sites. An independent science panel was formed to develop the best methods to grade waterway health and to ensure the results were scientifically credible.

The partnership is now able to offer reliable waterway health information. The data from this report card will provide valuable comparison for future years.

A scientific approach to waterway health... made simple!

There are dozens of sources of waterway monitoring data across the Fitzroy Basin. The Fitzroy Partnership draws together this information, assesses and presents it in an easy to understand way to give you a clearer picture of waterway health.

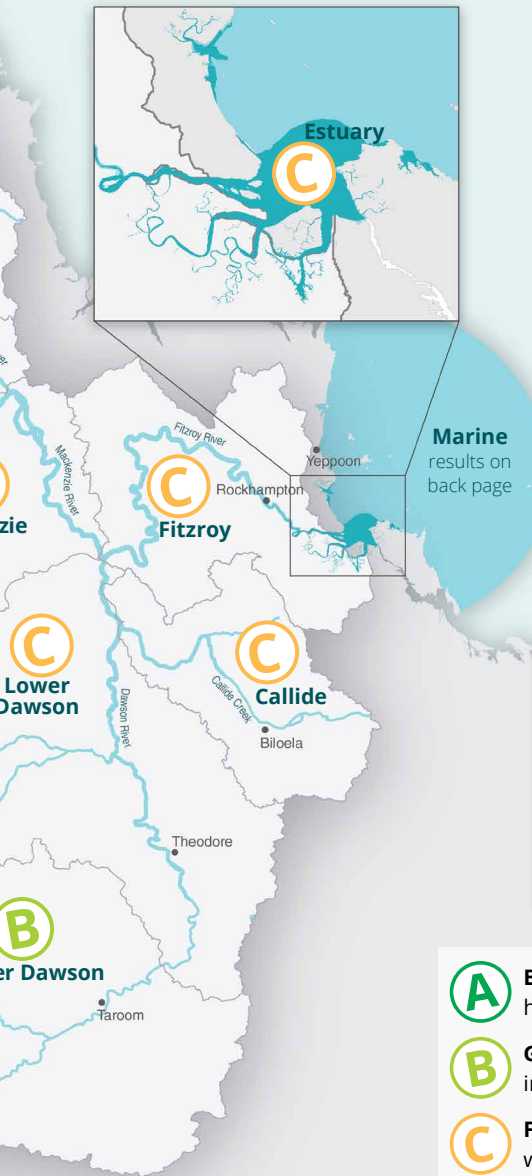
This comprehensive look at local river health will add to local decision-making tools that help our community achieve healthier waterways.



"This report card draws upon best available scientific information to provide a comprehensive and understandable picture of river health for the Fitzroy Basin"

*Professor Barry Hart, AM
Science panel chair*





The results:

Overall, the Fitzroy Basin was in a fair condition with a mix of both good and poor levels of waterway health.

This was one of the wettest years on record for our basin, far exceeding a 30 year average. Rainfall moves a significant amount of sediment and nutrients from our catchments into our waterways, affecting water quality.

Grades are provided for each of the 11 catchments across the basin and the estuary. Marine results are on back page.

Learn more about the grades, or see the rating for a particular water quality, biological or ecological indicator by visiting www.riverhealth.org.au.

What do we mean by waterway health?

We've assessed water quality, biological and ecological health information for all rivers in the Fitzroy Basin, the estuary, as well as near-shore coastal and marine waters.

- A Excellent.** All water quality and biological health indicators meet desired levels.
- B Good.** Most water quality and biological health indicators meet desired levels.
- C Fair.** There is a mix of good and poor levels of water quality and biological health indicators.
- D Poor.** Some or few water quality and biological health indicators meet desired levels.
- E Fail.** Very few or no water quality and biological health indicators meet desired levels.



How are grades determined? A brief overview.

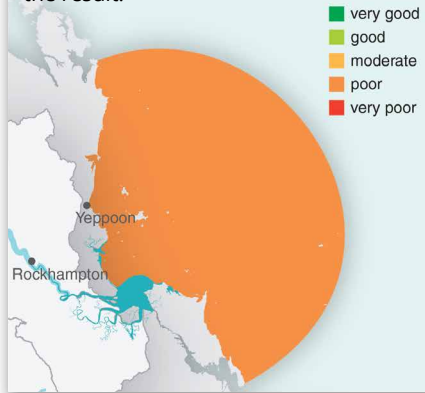
This report card has been prepared using the following steps:

1. Waterway monitoring data is assessed against levels of health for indicators endorsed by our independent science panel.
2. Indicators are grouped into four categories: physical and chemical; nutrients; toxicants; and ecology.
3. The results from each category are combined to provide an overall rating for each reporting area.

Visit the website for more information:
www.riverhealth.org.au

Marine results

The marine zone was in poor condition during 2010-11. This is most likely attributed to the largest flood discharge from the Fitzroy in recorded history, delivering increased sediment and nutrient loads to the marine environment. Data from the GBRMPA marine monitoring program was assessed against ReefPlan Reporting indicators and thresholds to determine the result.



Major partners



Partners



Associate partners

