

Fitzroy Water Quality Improvement Plan



Through funding from the Australian Government's Reef Programme, Fitzroy Basin Association Inc. (FBA) has collaborated with scientists, industry experts, communities and all levels of government to develop the Fitzroy Water Quality Improvement Plan, WQIP:2015.



Australian Government

Today's Presentation

- Brief overview of WQIP:2015
 - Why develop a WQIP?
 - How it was developed
 - Priority areas
 - Key messages

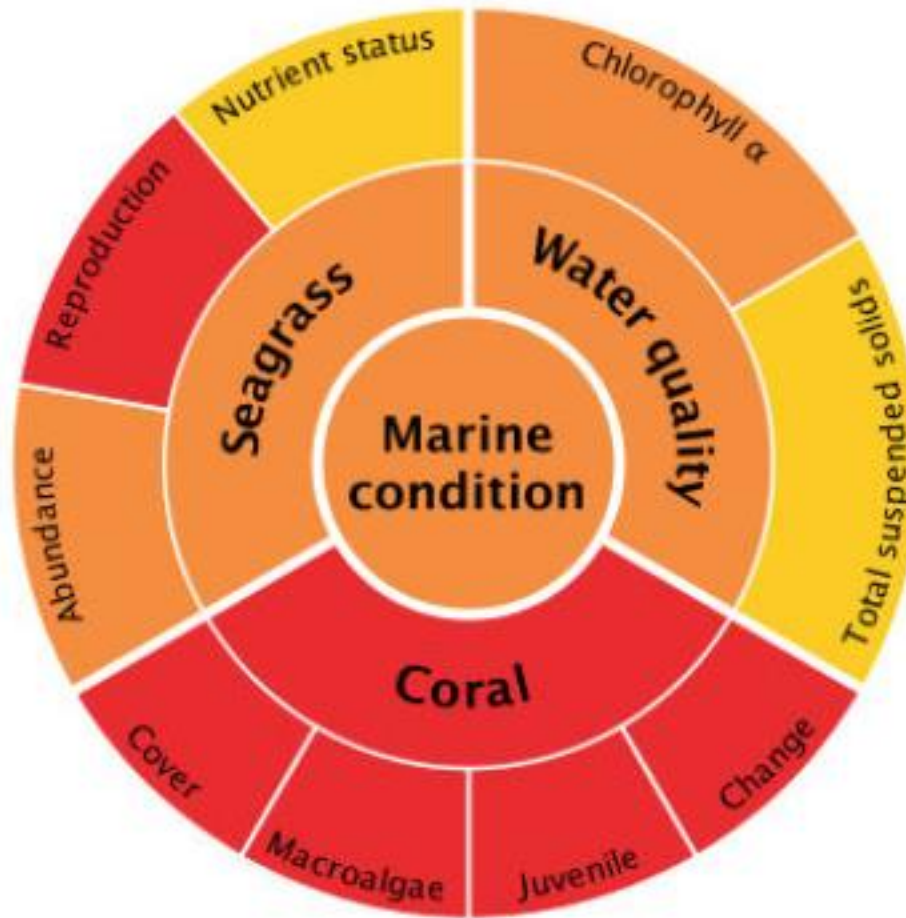


Our partners in developing the plan include:

- Fitzroy Partnership for River Health
 - James Cook, Southern Cross and CQ Universities
 - Great Barrier Reef Marine Park Authority
 - Queensland Department of Environment and Heritage Protection
 - Queensland Department of Agriculture and Fisheries
 - C2O
 - Consultants Roger Jaensch, Tim Marsden and John Gunn
 - Australian Government
 - Queensland Government
 - Sub Regional Delivery Partners: Capricornia Catchments, Central Highlands Regional Resources Use Planning (CHRRUP), and Dawson Catchment Coordinating Association (DCCA)
 - Gladstone Ports Corporation
- 

Why develop WQIPs?

- 50% decline
- Coral reefs c
- 23% of sedin
- Estimated th
- leaving the F
- Prior to WQI



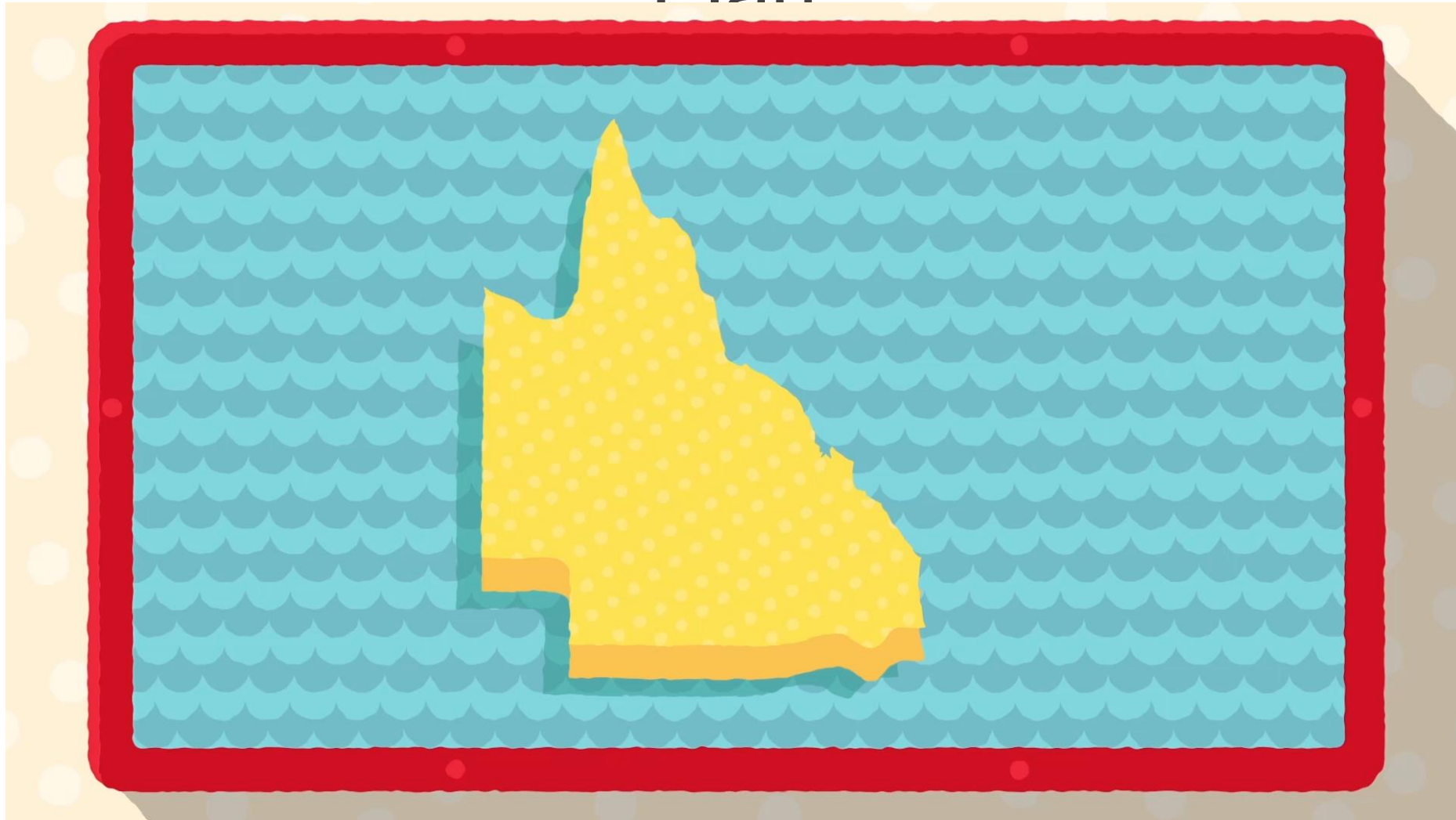
- Very good
- Good
- Moderate
- Poor
- Very poor

al amounts are

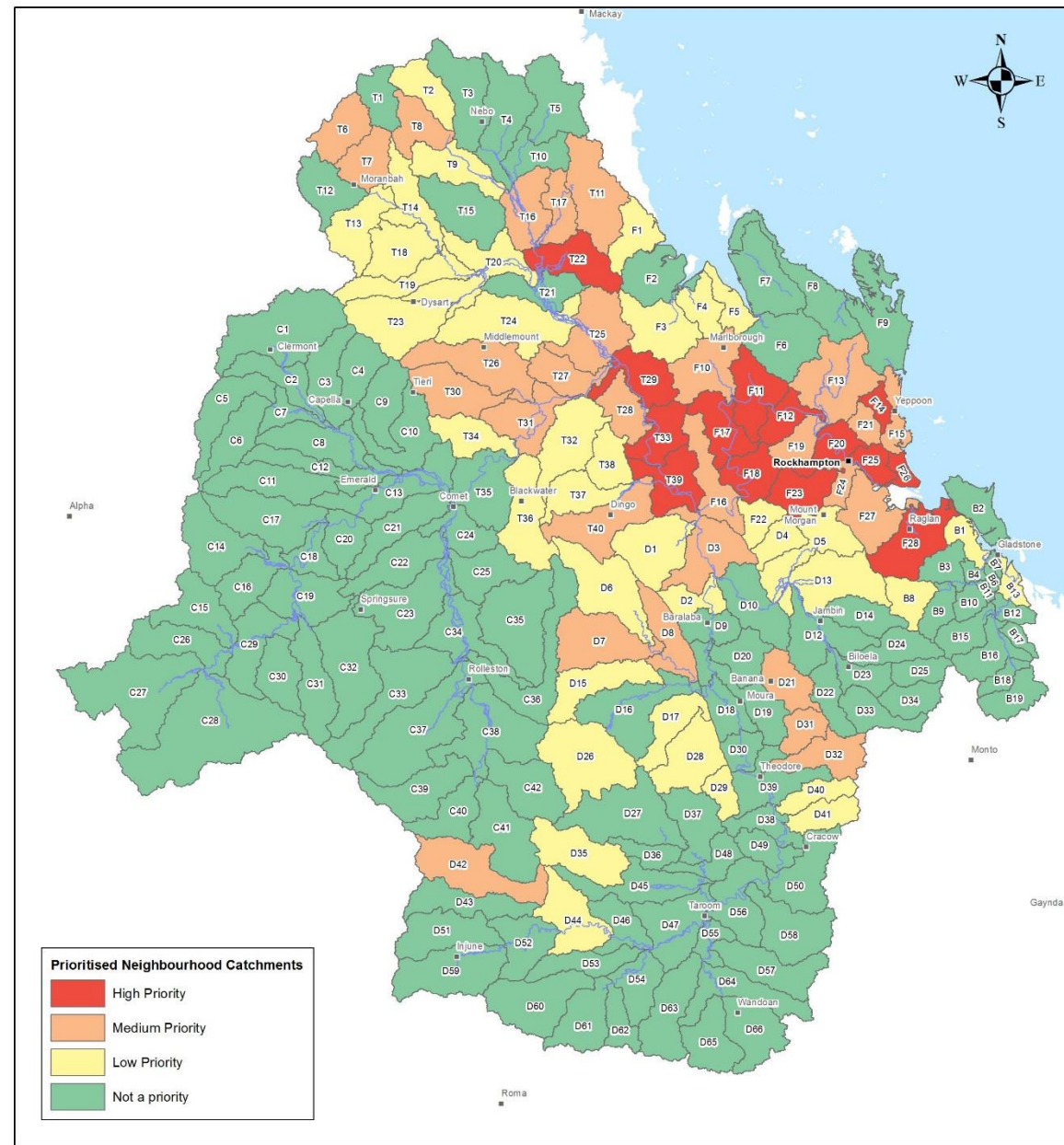
egion.



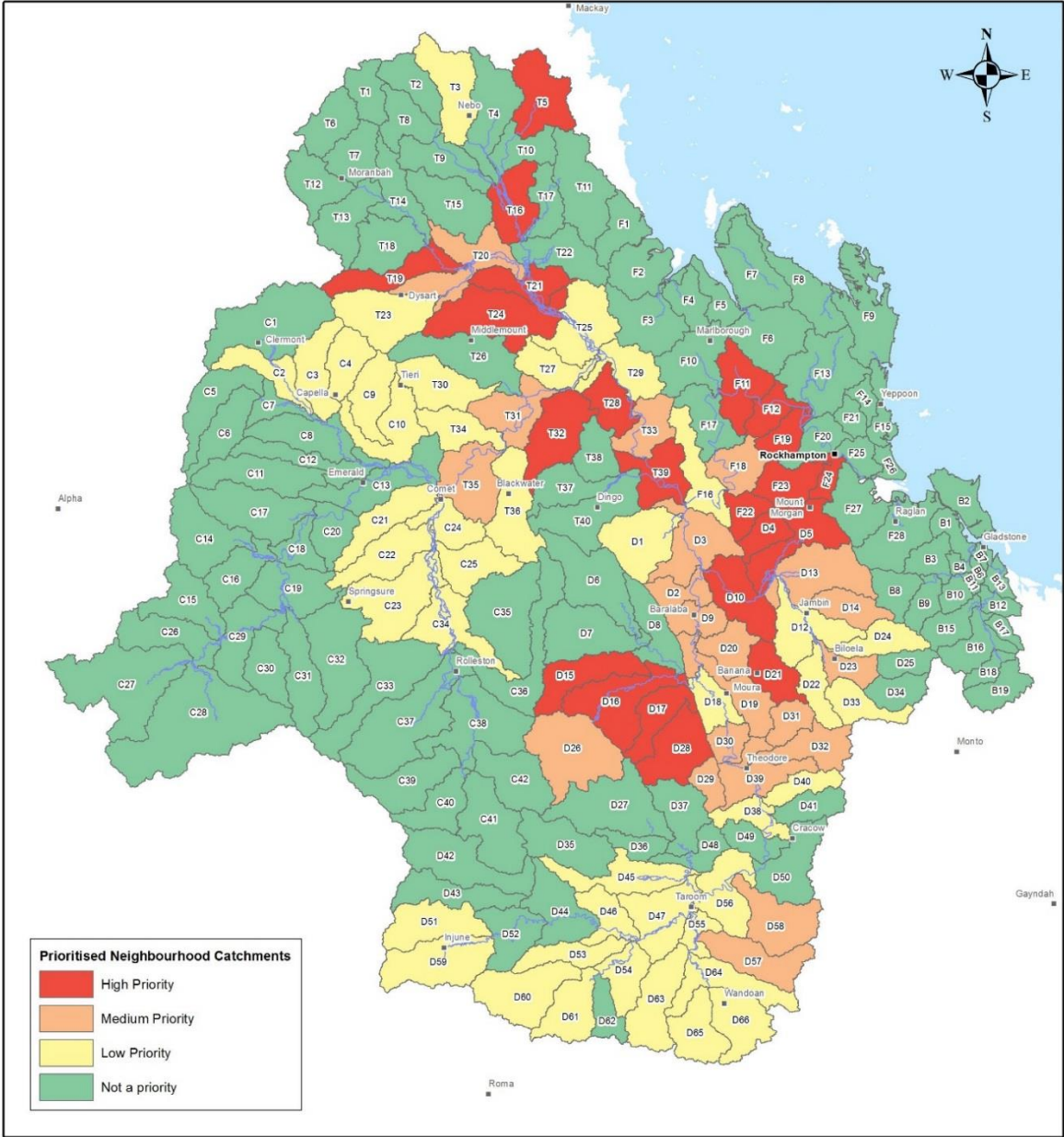
Fitzroy Water Quality Improvement Plan




Grazing Prioritisation



Farming Prioritisation



Key Learnings - Agriculture

- Stocking rate is considered the single greatest driver of land condition that can be managed.
 - Extension support needs to be provided by staff with a high technical knowledge and should be multi-faceted.
 - Training / extension alone is not enough to achieve change needed.
 - Focus on areas of fine / highly erodible soils.
 - Significant opportunity to achieve good outcomes in the farming industry.
- 
- A decorative graphic at the bottom of the slide consisting of three horizontal brushstrokes in yellow, blue, and green, overlapping each other.

Further Information

View the WQIP:2015 at fba.org.au/wqip

Contact FBA: Cassandra.Bouna@fba.org.au | 07 4999 2820

A decorative graphic at the bottom of the slide consisting of three overlapping horizontal brushstrokes in yellow, blue, and green.