

fitzroy
partnership
for river health



Fitzroy Basin
Report Card **2011-12**

grades
inside

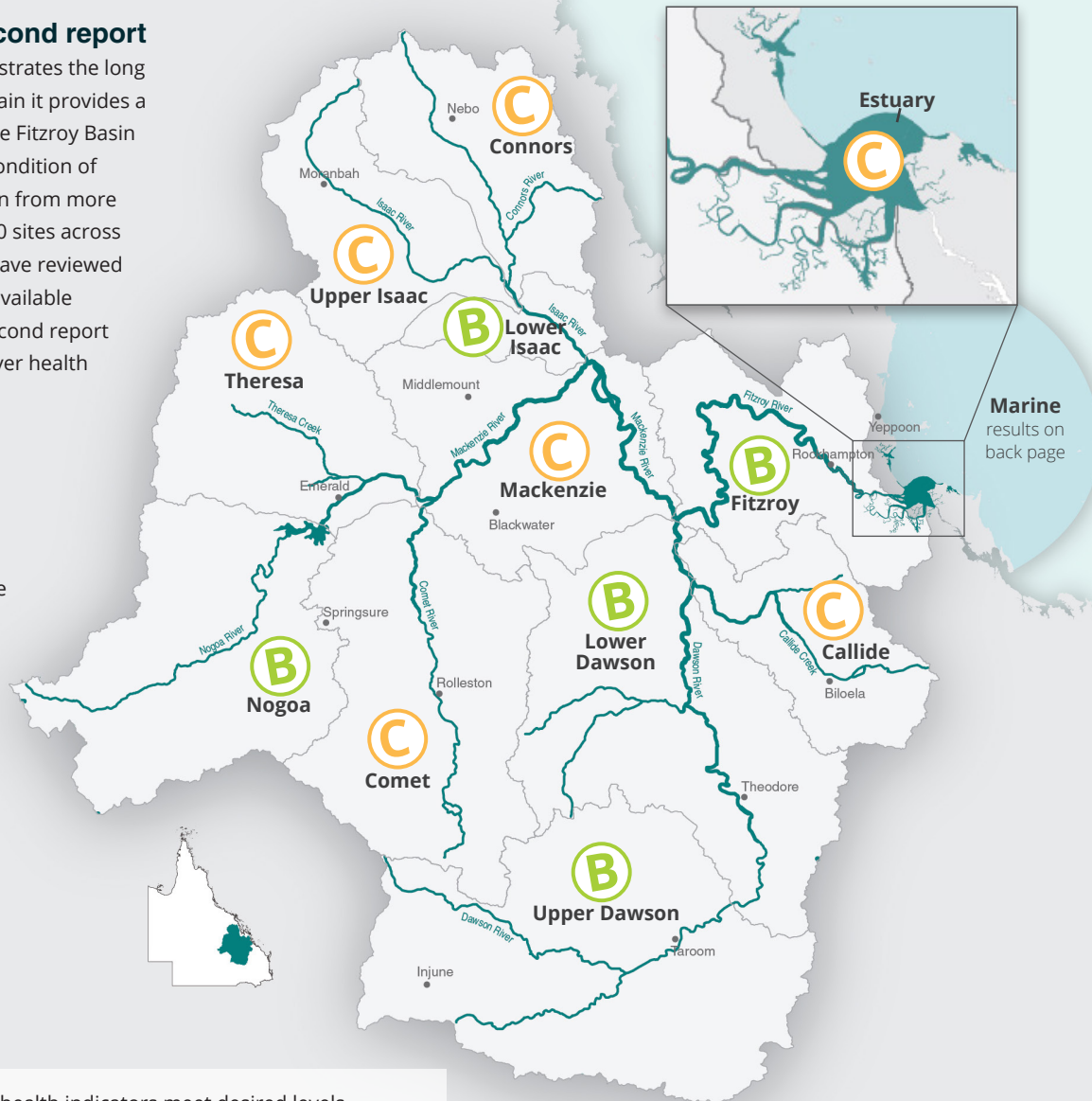


Ongoing commitment delivers second report

This second waterway health report demonstrates the long term commitment of our partners. Once again it provides a more complete picture of river health for the Fitzroy Basin by assessing and awarding grades for the condition of waterways in 2011-12. The grades are drawn from more than 945,000 sample results collected at 230 sites across the Basin. The independent Science Panel have reviewed and endorsed these results using the best available scientific information. The release of this second report moves us one step closer to reporting on river health trends.

Partnership to inform community on drinking water

The Fitzroy Partnership will soon release the first Drinking Water Reports for residents of our member regional councils - Rockhampton and Central Highlands. These reports will provide information on the quality of raw river and dam water used by Councils to produce drinking water and allow people to better understand how Council treatment systems deliver safer drinking water.



The results:

Overall a C grade was retained for the Fitzroy Basin in 2011-12 as most reporting areas remained stable or improved. Generally there was an improvement in turbidity, metal and nutrient results and a decline in salt and sulfate scores. Factors that influenced the scores in this report card included less intense rainfall and flow than the previous year resulting in less catchment runoff, as well as higher groundwater levels which led to prolonged river flow in the second half of 2011.

What do we mean by waterway health?

We've assessed water quality, biological and ecological health information for all rivers in the Fitzroy Basin, the estuary, as well as near-shore coastal and marine waters.

Find out more:
www.riverhealth.org.au

- (A) Excellent.** All water quality and biological health indicators meet desired levels.
- (B) Good.** Most water quality and biological health indicators meet desired levels.
- (C) Fair.** There is a mix of good and poor levels of water quality and biological health indicators.
- (D) Poor.** Some or few water quality and biological health indicators meet desired levels.
- (E) Fail.** Very few or no water quality and biological health indicators meet desired levels.

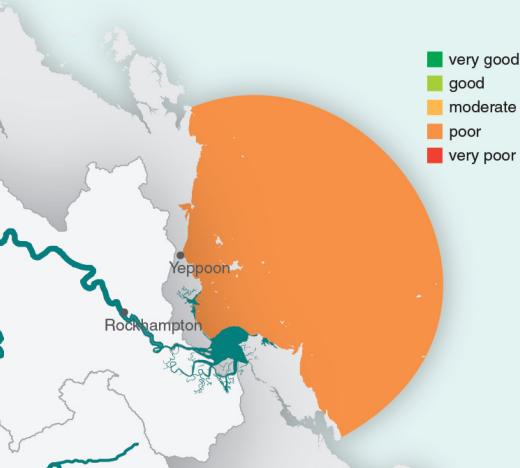
"The uniqueness of the partnership has been the willingness of stakeholders to work together. There's been an acknowledgement of the different perspectives, but always the overwhelming desire to drive the partnership forward for a good report card as a baseline and the continuity of the partnership into the future."

Dr Carl Grant - Co Chair and Anglo American Group Head of Mine Closure Planning



Marine results

In 2011-12 the Marine zone was again found to be in poor condition. This is likely attributed to continuing impacts from the 2011 floods resulting in larger sediment and nutrient loads reaching the marine area, as well as physical disturbance from storms during that period.



How are grades determined? A brief overview.

This report card has been prepared using the following steps:

1. Monitoring data is assessed against waterway health indicators endorsed by our independent science panel.
2. Indicators are grouped into four categories: physical and chemical; nutrients; toxicants; and ecology.
3. The results from each category are combined to provide an overall rating for each reporting area.

Visit the website for more information:

www.riverhealth.org.au

Major partners



Partners



Associate partners

